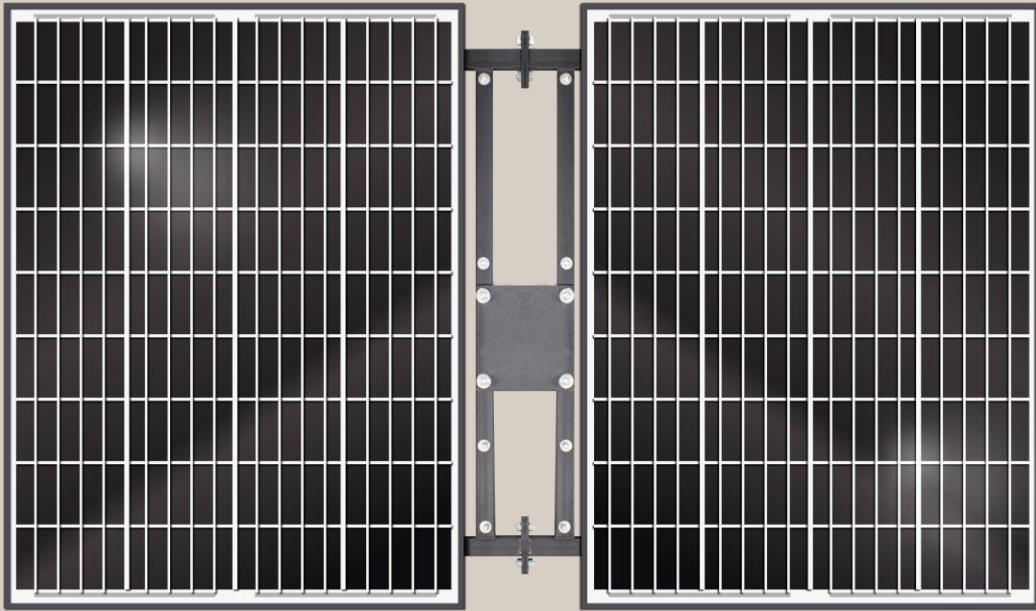


SUNSHINE X2

SOLAR POWERED · 160W OUTPUT · LiFePO BATTERY

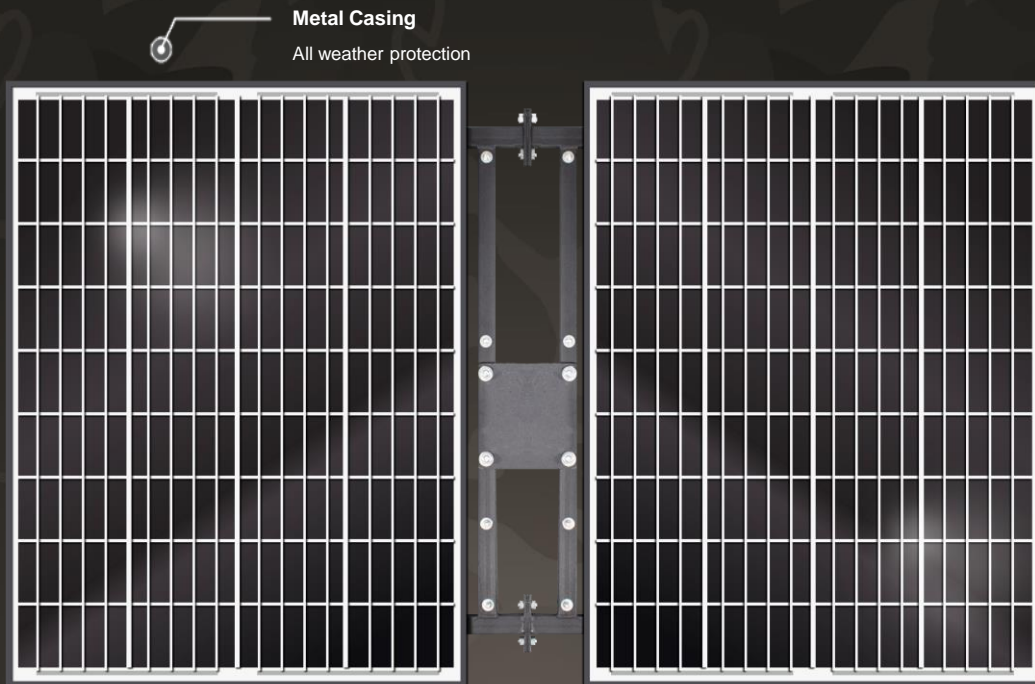


POWER WHEREVER
YOU NEED IT



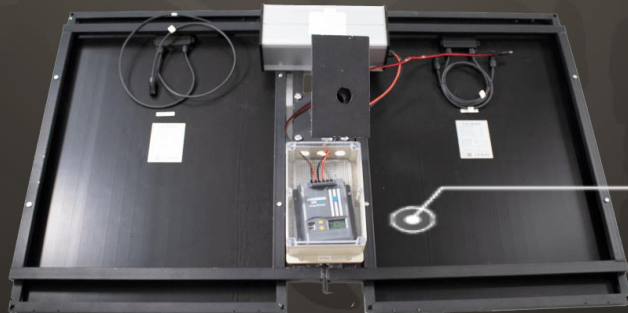
WEATHER PROOF
METAL CASING

Monkey Vision
ARE THE ONLY CAMERAS
DESIGNED IN AUSTRALIA
AND OPTIMISED TO WORK
BETTER IN AUSTRALIA.



Metal Casing
All weather protection

160W Output
The perfect amount of power
across both panels (2x80W)



LiFePO Battery
Holds charge for those cloudy
days

SUNSHINE X2

SOLAR POWERED · 160W OUTPUT · LiFePO BATTERY

- Power wherever you need it
- Easy Installation
- Suitable for a Sentry or Gatekeeper
- Sturdy supporting frame

IDEAL USE

- Work sites without power
- Sport grounds
- Large yards
- Brownfield developments

KEY STATS

LiFePO Battery 12V

Charging voltage 12V

Over charge / Short circuit protection

160W solar panel output (2 x 80W)

Operates between -20 to 60 degrees

Provides standby recording even on rainy, overcast days

One full charge = 3 days for Gatekeeper

One full charge = 2 days for Sentry 5/20

**SUPPORTS
THESE
MONKEY
VISION
PRODUCTS**



SENTRY 20/5



GATEKEEPER



TREE

TECHNICAL SPECIFICATIONS

SUNSHINE X2

Solar Panel Parameter

Peak Power	160W (2x 80W)
Power Tolerance	±3%
Short-circuit current	4.67
Max.System Voltage	1000V
Open Circuit Voltage(Voc/V)	21.78
Maximum Power Current(Imp/A)	4.44
Maximum Power Voltage Vpm(V)	18V
Diode	Bypass
Size of solar panel	835*670*30mm (each)

Solar Controller

System Voltage	12V
Rated Charge Current	10A
Charge mode	PWM
Feature	Programmable LCD screen
	USB charging output

Battery Parameter

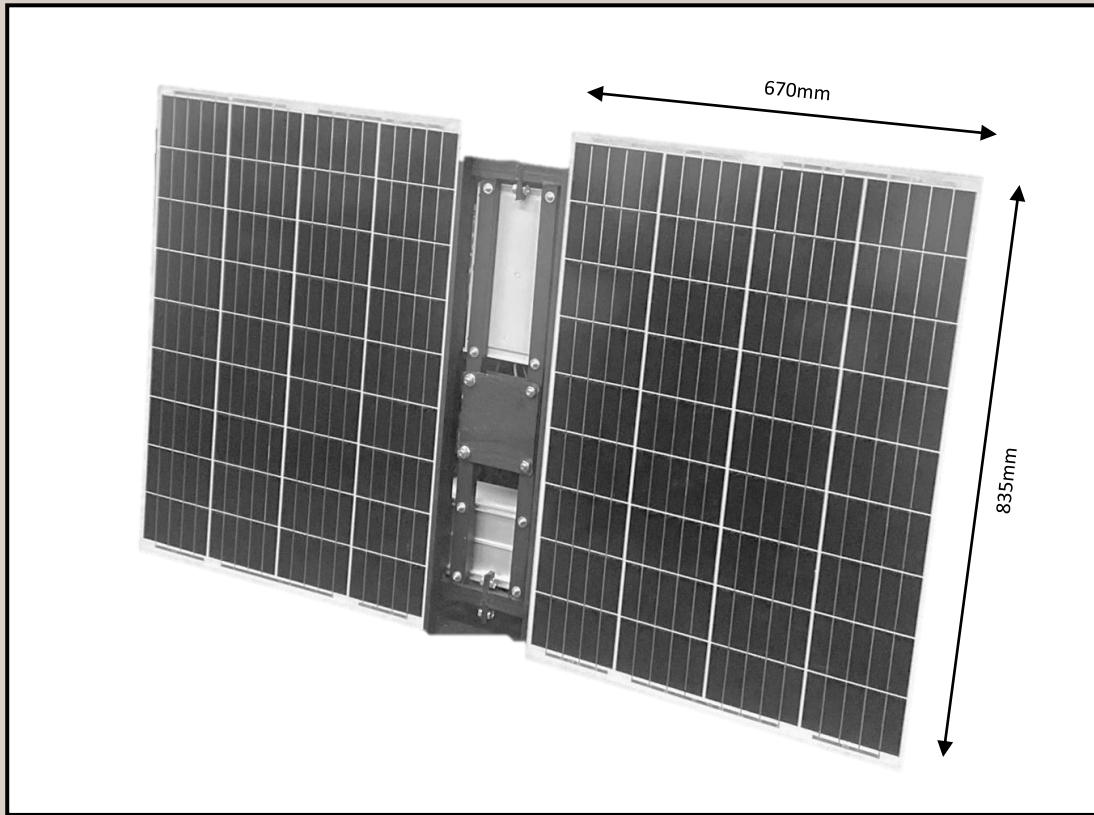
Lithium battery	Lithium Ferrous Polymer (LiFePO)
Output voltage	12V

Packaging Detail

Carton box size	960*690*90mm / 200*290*360mm / 200*800*830mm
Weight	25KG

SUNSHINE X2

SOLAR POWERED · 160W OUTPUT · LiFePO BATTERY



THE ONLY THING BETTER
THAN HAVING A MATE
WATCH YOUR STUFF,
IS HAVING A PRIMATE
WATCH YOUR STUFF.

MAMMOTH
INNOVATION

Level 1, 527 Chapel Street, South Yarra. Vic. Australia 3141

MONKEY-VISION.COM.AU